

ATFAB

Project Presentation

FEBRUARY 26, 2018



Colorado State University

FACILITIES
MANAGEMENT

AT COLORADO STATE UNIVERSITY

Projects

1. Green Trail Extension
2. North-South Bikeway (Prairie Loop Completion)
3. Oval Drive at Administration Building



Facilities Management Project Proposal

Green Trail Extension

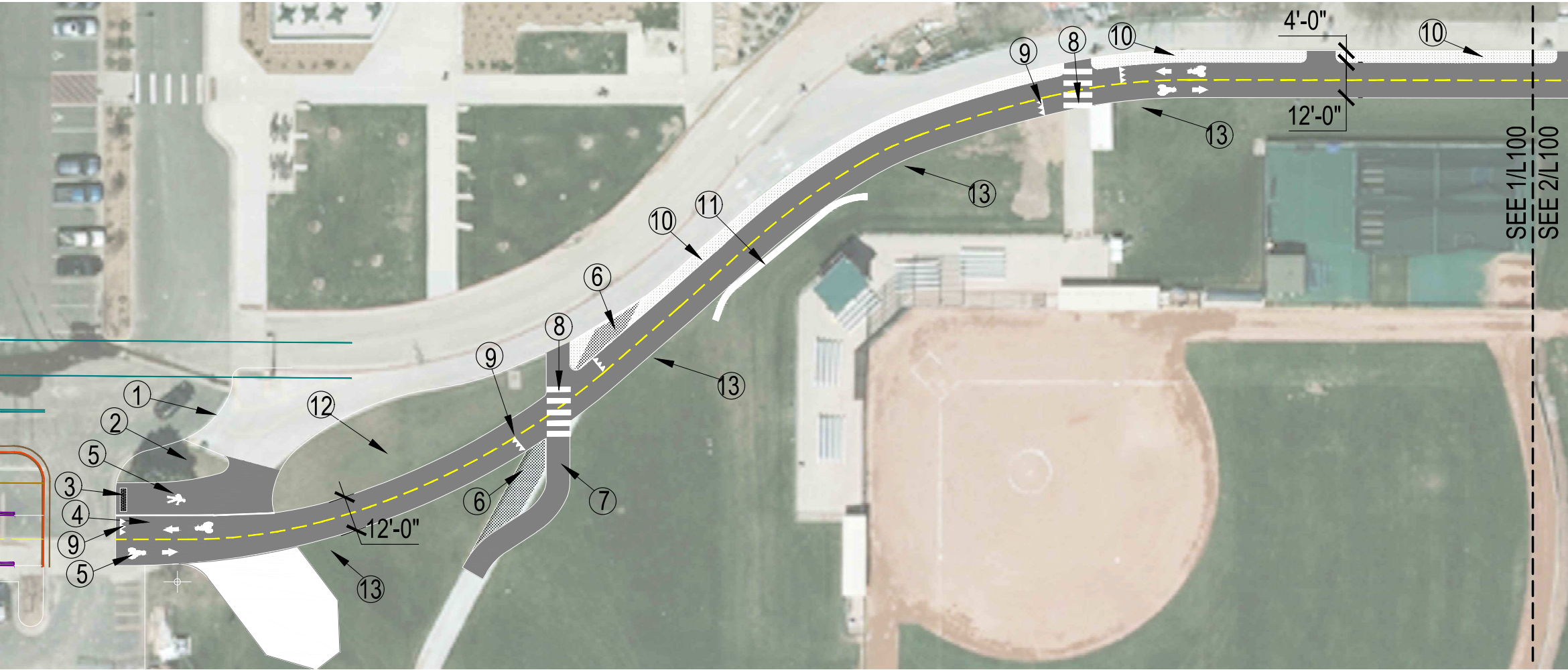


Colorado State University



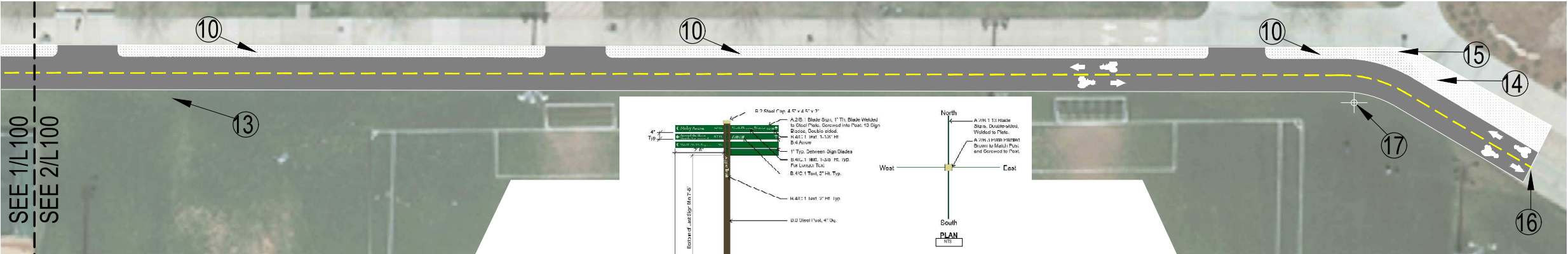
Shields Street Underpass

- 18 month Feasibility Study completed in coordination with City of Ft Collins
- Opened in August 2017
- Cost paid by CSU: \$10m (Central Admin funds)

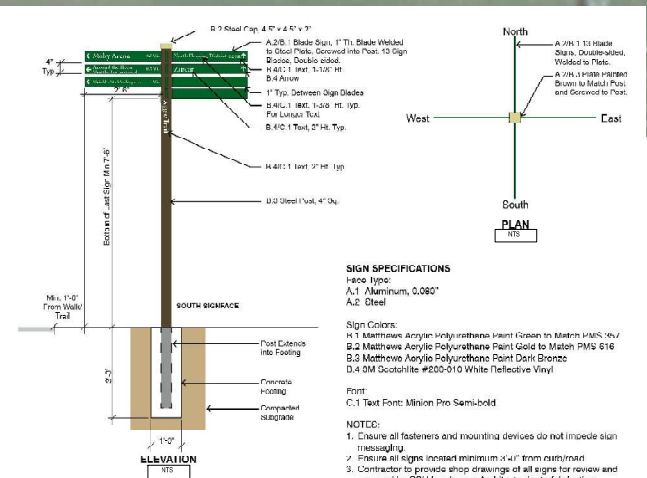


- KEY NOTES:**
- 1 REMOVE EX. SLOPED CURB RAMP, REPLACE W/ STANDARD 6" VERTICAL CURB.
 - 2 REMOVE SPRUCE TREE, REPLACE LANDSCAPE TO MATCH BOULEVARD STRIP TO WEST.
 - 3 INSTALL NEW CURB RAMP TO ALIGN W/ WALK TO WEST. INSTALL TRUNCATED DOMES
 - 4 NEW 6" THICK CONCRETE FOR MIXED USE PATH
 - 5 INSTALL THERMOPLASTIC SYMBOLS FOR BIKE/ PEDESTRIAN PER CSU STANDARD GRAPHICS
 - 6 REMOVE CONCRETE PATH WHERE SHOWN, REPLACE W/ SOD, ADJUST IRRIGATION SPRINKLERS FOR COVERAGE
 - 7 NEW 6" THICK CONCRETE PATHWAY
 - 8 INSTALL THERMOPLASTIC CROSSWALK PANELS
 - 9 INSTALL THERMOPLASTIC YIELD SYMBOLS (TYP ALL.)
 - 10 INSTALL 3'-6" DIA. RIVER COBBLE OVER WEED BARRIER FABRIC, 6" DEPTH. ABANDON EXISTING IRRIGATION HEADS REPLACE PER NOTE 13 BELOW.
 - 11 INSTALL SEGMENTAL BLOCK RETAINING WALL, AUTUMN BLEND MIX COLOR, HEIGHT TO RETAIN EXISTING BERM
 - 12 SOD TO REMAIN, ADJUST IRRIGATION SPRINKLERS TO TRIM OUT ENTIRE AREA WITH NO OVERSPRAY ON WALKS
 - 13 ADJUST IRRIGATION SPRINKLERS ALONG ALL OF NEW CONCRETE PATH TO TRIM OUT ENTIRE LENGTH WITH NO OVERSPRAY ON NEW MIXED USE PATH.
 - 14 REMOVE EXISTING CONCRETE CROSSOVER, REPLACE W/ COBBLE PER NOTE 10 ABOVE
 - 15 RETAIN EXISTING LIGHT
 - 16 ALIGN NEW 12' WIDE CONCRETE PATH WITH EXISTING
 - 17 INSTALL NEW BIKEWAY SIGNAGE, SEE DETAIL THIS SHEET

1 BIKEWAY PLAN



2 BIKEWAY PLAN



3 BIKEWAY SIGN

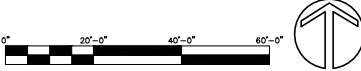
SIGN SPECIFICATIONS

Face type:
A.1 Aluminum, 0.080"
A.2 Steel

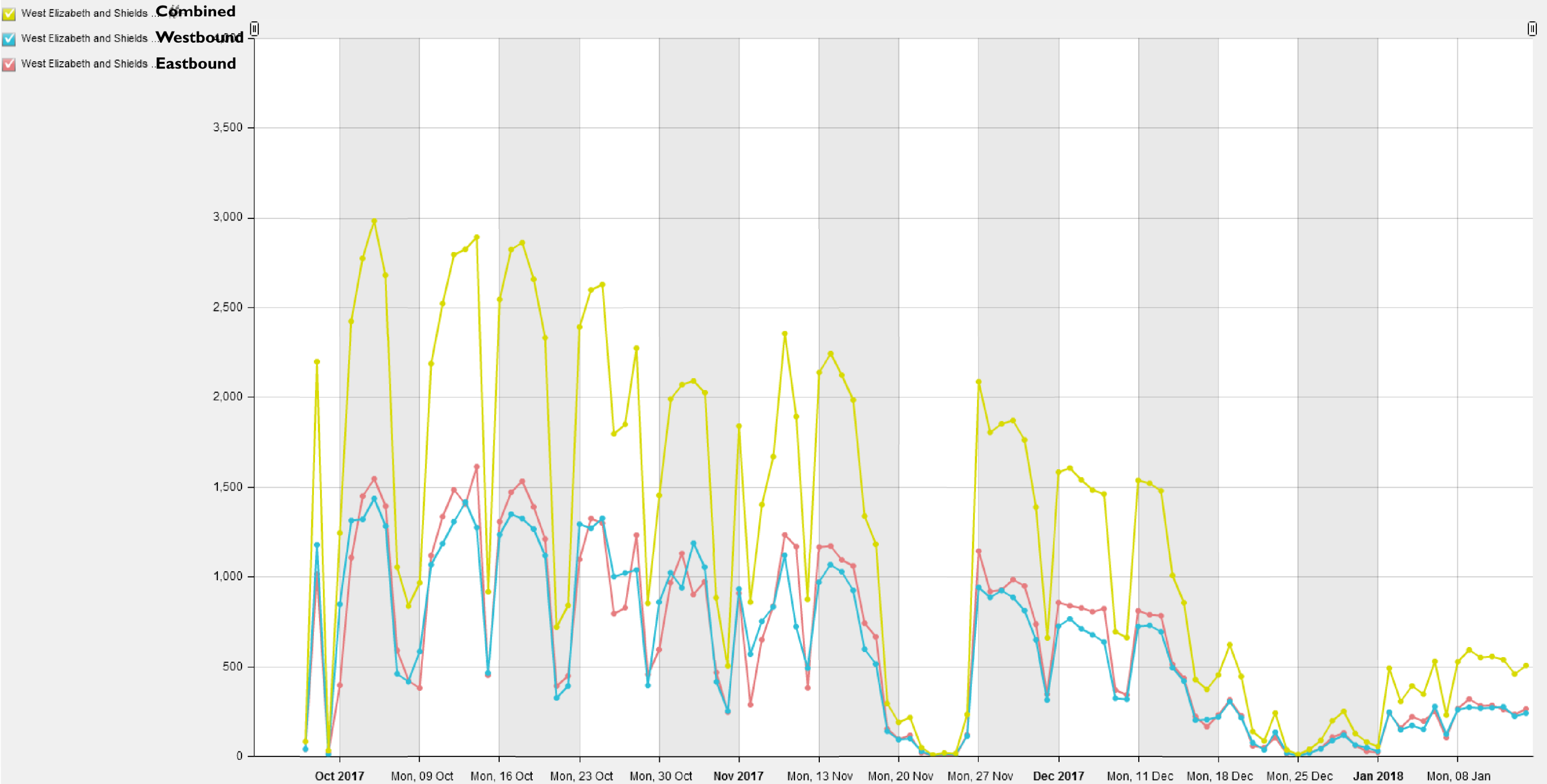
Sign Colors:
1.1 Matthews Acrylic Polyurethane Vant Green to Match PMS 616
2.1 Matthews Acrylic Polyurethane Vant Gold to Match PMS 616
3.1 Matthews Acrylic Polyurethane Vant Dark Bronze to Match PMS 616
4.1 DM Scotchlite #205-510 White Reflective Vinyl

Font:
C.1 Text Font: Milion Pro SemiBold

NOTES:
1. Ensure all fasteners and mounting devices do not impede sign messaging.
2. Pressure all edges inward minimum 1/4" from fastener.
3. Contractor to provide shop drawings of all signs for review and approval by CSU Landscape Architect prior to fabrication.



Bike & Pedestrian Counts



Underpass Utilization - Oct '17 - Jan '18





Existing Condition
-10' wide sidewalk for all users



Proposed Condition
-Existing 10' wide sidewalk remains for pedestrians
-New 12' wide concrete path to be constructed for bicycle users
-4' wide separation between paved surfaces



View Looking East at the Human Bean



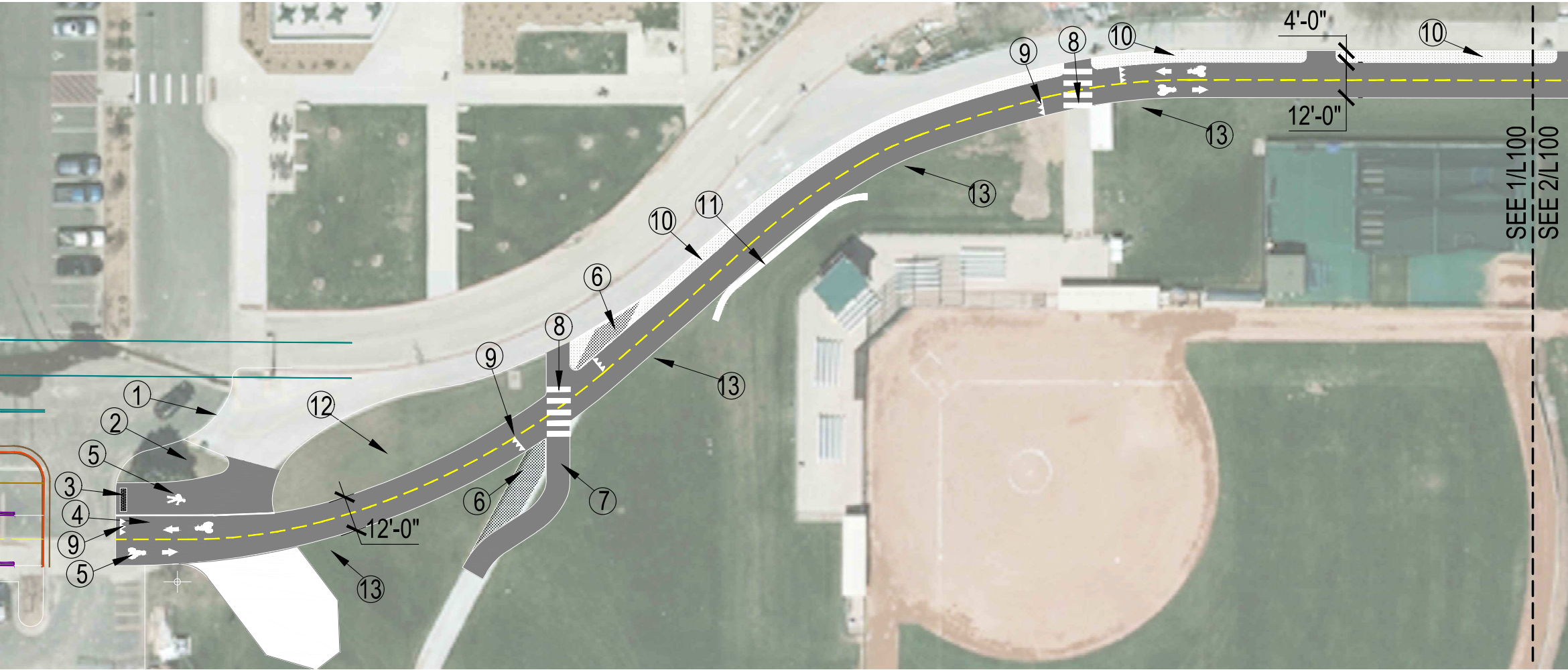
View Looking East at Moby



View Looking East at Softball

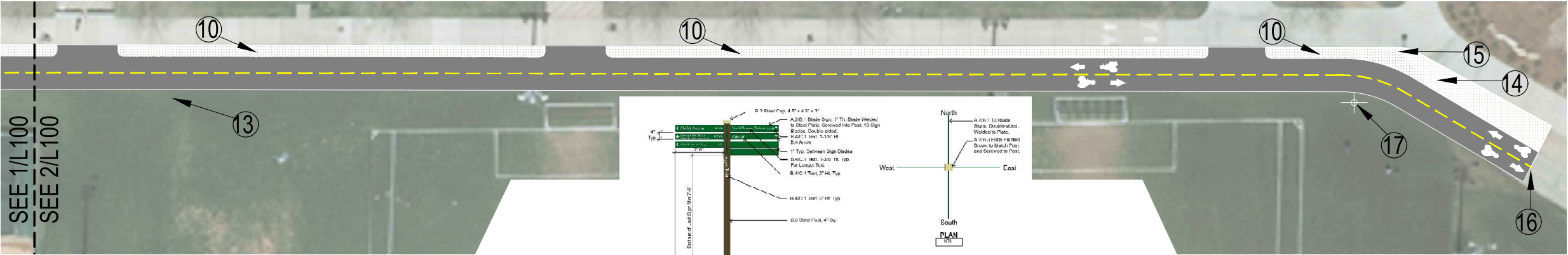


View Looking West at SRC

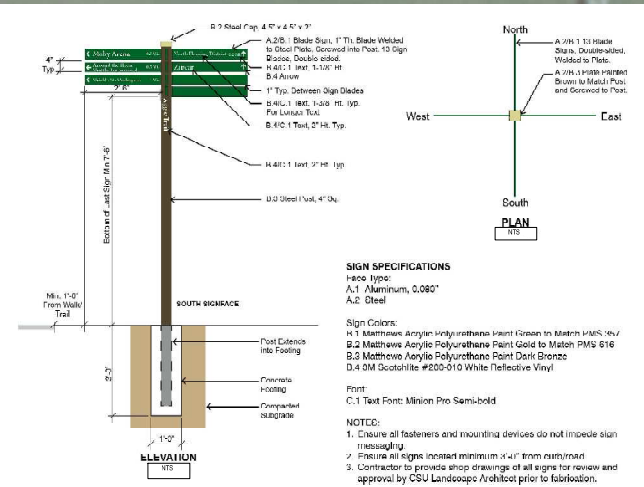


- KEY NOTES:**
- 1 REMOVE EX. SLOPED CURB RAMP, REPLACE W/ STANDARD 6" VERTICAL CURB.
 - 2 REMOVE SPRUCE TREE, REPLACE LANDSCAPE TO MATCH BOULEVARD STRIP TO WEST.
 - 3 INSTALL NEW CURB RAMP TO ALIGN W/ WALK TO WEST. INSTALL TRUNCATED DOMES
 - 4 NEW 6" THICK CONCRETE FOR MIXED USE PATH
 - 5 INSTALL THERMOPLASTIC SYMBOLS FOR BIKE/ PEDESTRIAN PER CSU STANDARD GRAPHICS
 - 6 REMOVE CONCRETE PATH WHERE SHOWN, REPLACE W/ SOD, ADJUST IRRIGATION SPRINKLERS FOR COVERAGE
 - 7 NEW 6" THICK CONCRETE PATHWAY
 - 8 INSTALL THERMOPLASTIC CROSSWALK PANELS
 - 9 INSTALL THERMOPLASTIC YIELD SYMBOLS (TYP ALL.)
 - 10 INSTALL 3'-6" DIA. RIVER COBBLE OVER WEED BARRIER FABRIC, 6" DEPTH. ABANDON EXISTING IRRIGATION HEADS REPLACE PER NOTE 13 BELOW.
 - 11 INSTALL SEGMENTAL BLOCK RETAINING WALL, AUTUMN BLEND MIX COLOR, HEIGHT TO RETAIN EXISTING BERM
 - 12 SOD TO REMAIN, ADJUST IRRIGATION SPRINKLERS TO TRIM OUT ENTIRE AREA WITH NO OVERSPRAY ON WALKS
 - 13 ADJUST IRRIGATION SPRINKLERS ALONG ALL OF NEW CONCRETE PATH TO TRIM OUT ENTIRE LENGTH WITH NO OVERSPRAY ON NEW MIXED USE PATH.
 - 14 REMOVE EXISTING CONCRETE CROSSOVER, REPLACE W/ COBBLE PER NOTE 10 ABOVE
 - 15 RETAIN EXISTING LIGHT
 - 16 ALIGN NEW 12' WIDE CONCRETE PATH WITH EXISTING
 - 17 INSTALL NEW BIKEWAY SIGNAGE, SEE DETAIL THIS SHEET

1 BIKEWAY PLAN



2 BIKEWAY PLAN



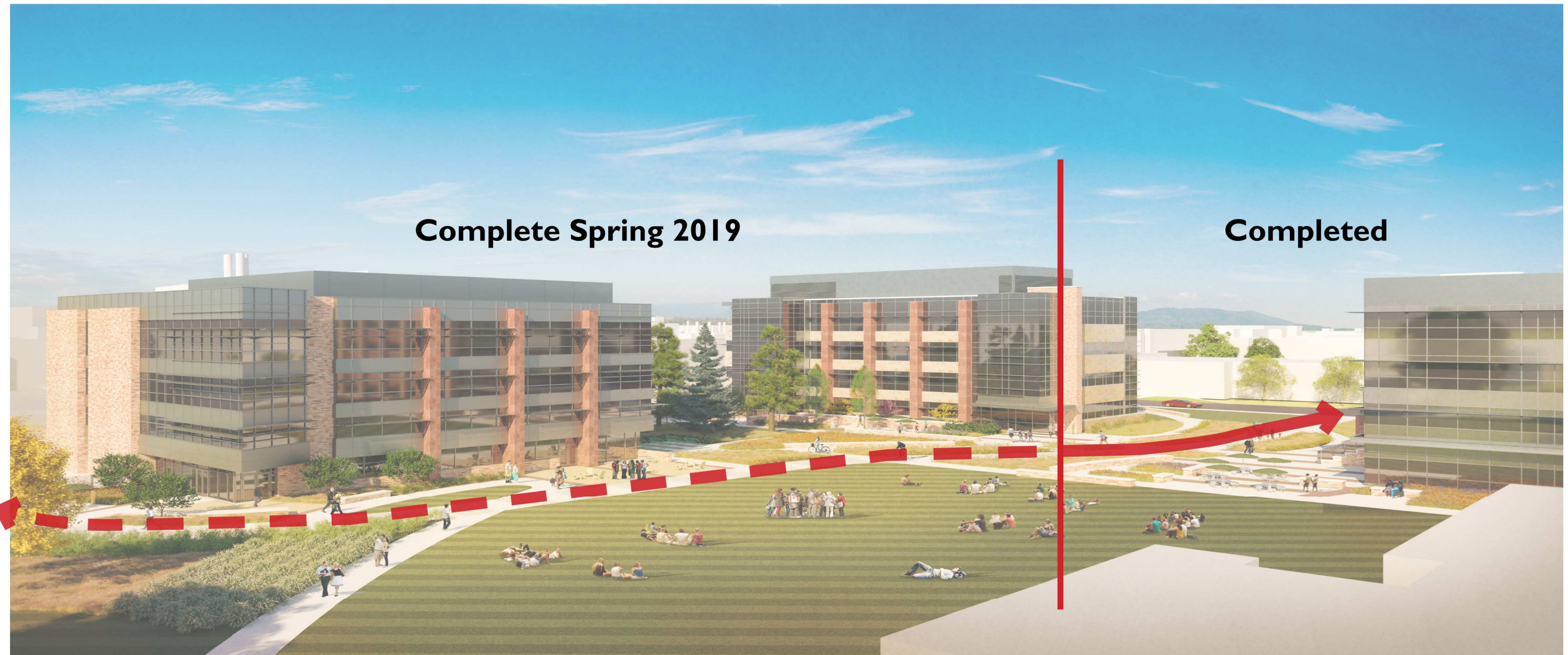
3 BIKEWAY SIGN

Priority #1

North-South Bikeway Network
(Prairie Loop Completion)
Project #1 & #3



Colorado State University



Science Quad - Complete Spring 2019



Existing Condition
-Opportunity awaits!

North-South Bikeway Network

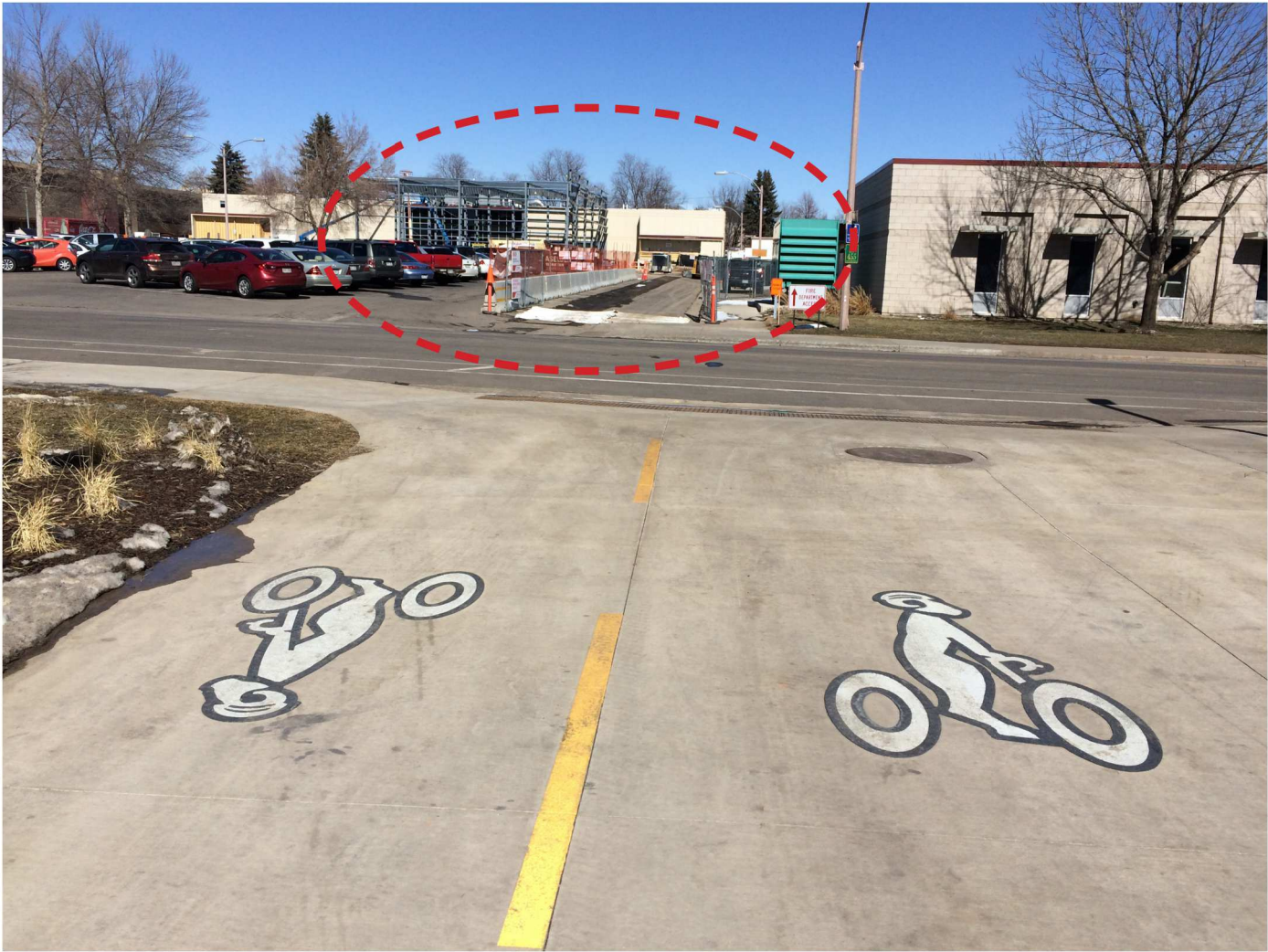
February 2018



Colorado State University

FACILITIES MANAGEMENT

AT COLORADO STATE UNIVERSITY

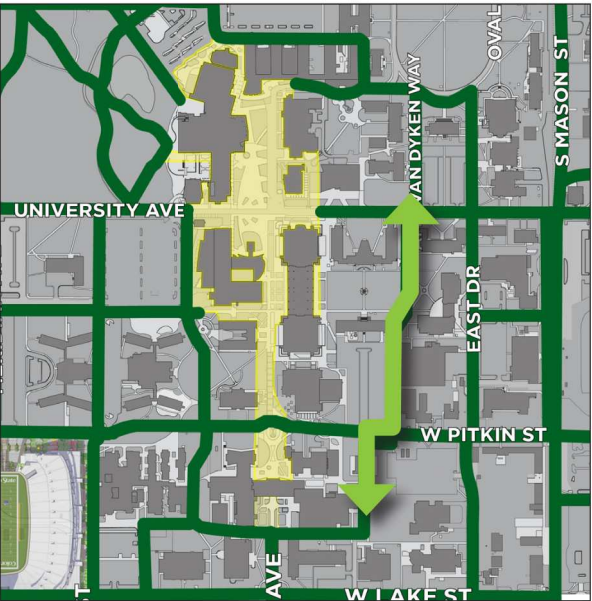


Existing Condition
-Opportunity awaits!

1. North-South Pathway

Limits: University Ave and Anatomy and Zoology Building

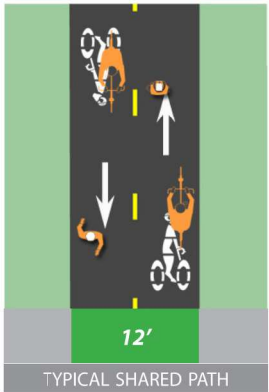
Creates a key north-south connection through the center of campus



RECOMMENDATION

- Construct new 12' shared path through open spaces between buildings east of the Dismount Zone
- Centerline and pavement markings to reduce conflicts

Construction Cost Estimate: \$240,000



EXISTING CONDITIONS

- No parallel route east of dismount zone for north-south movement
- Series of 6' sidewalks between buildings that are too narrow for bicycle and pedestrian traffic.
- No existing route south of Pitkin Street without using parking lots





View Looking Northeast at Animal Science



View Looking North at Monfort Quad



Supplemental Masterplan graphic

February 2018

North-South Bikeway Network Concept Rendering



Colorado State University

FACILITIES MANAGEMENT

AT COLORADO STATE UNIVERSITY



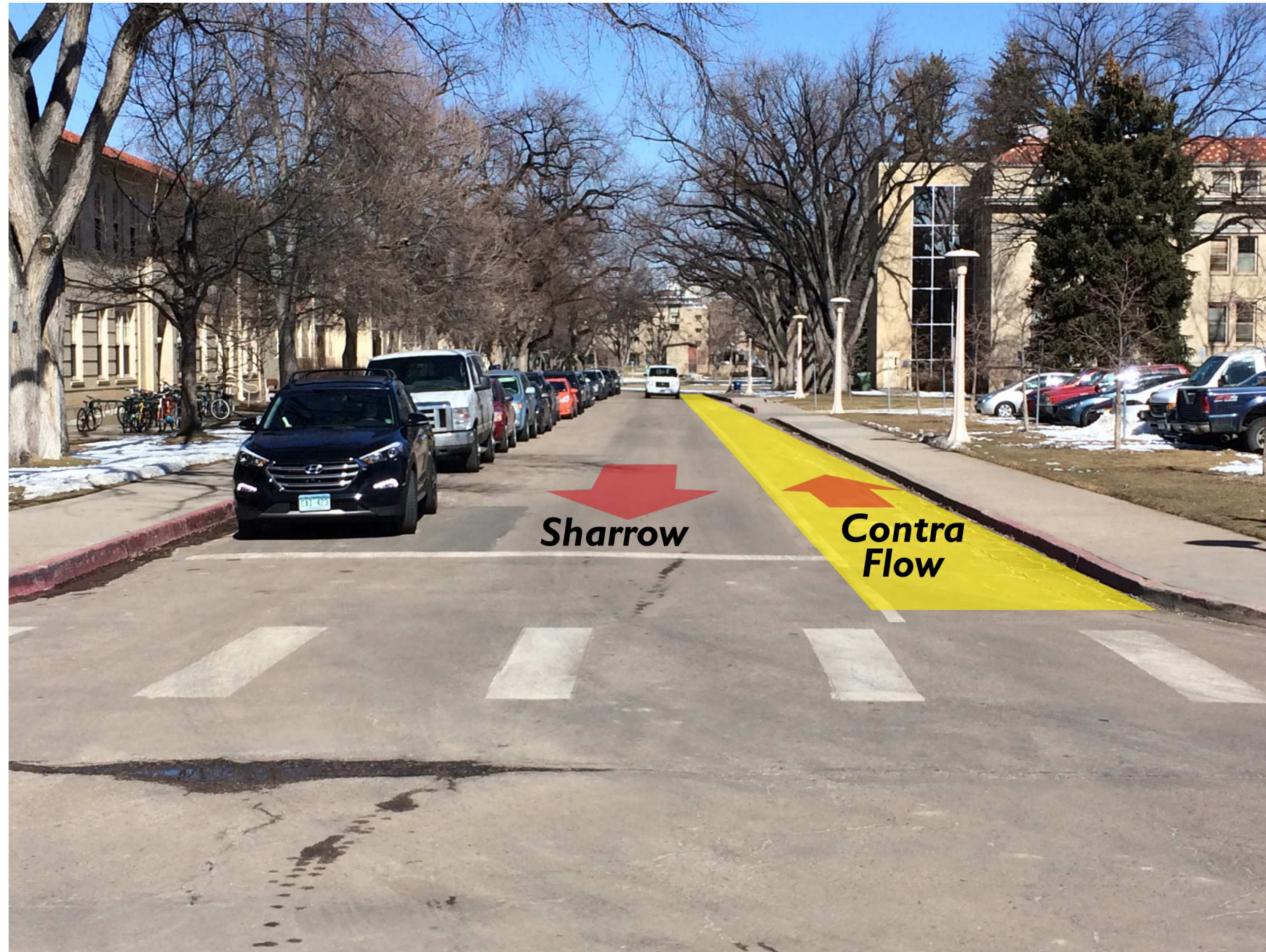
View Looking North at Plant Science



View Looking North at Shepardson



Supplemental Masterplan graphic



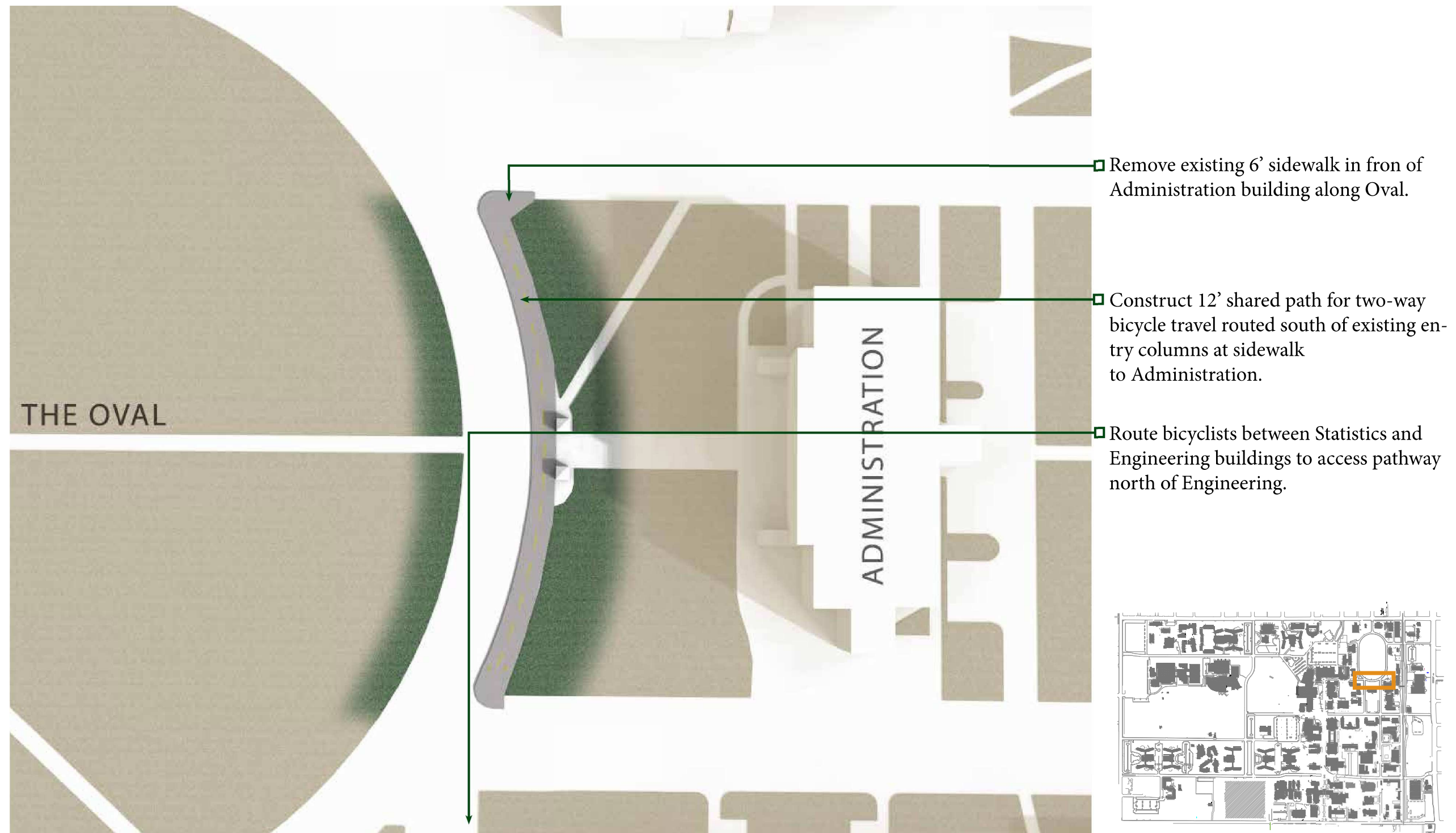
View Looking North at University Avenue and Amy VanDyken

Priority #4

Oval Drive at Administration Building
Project #9



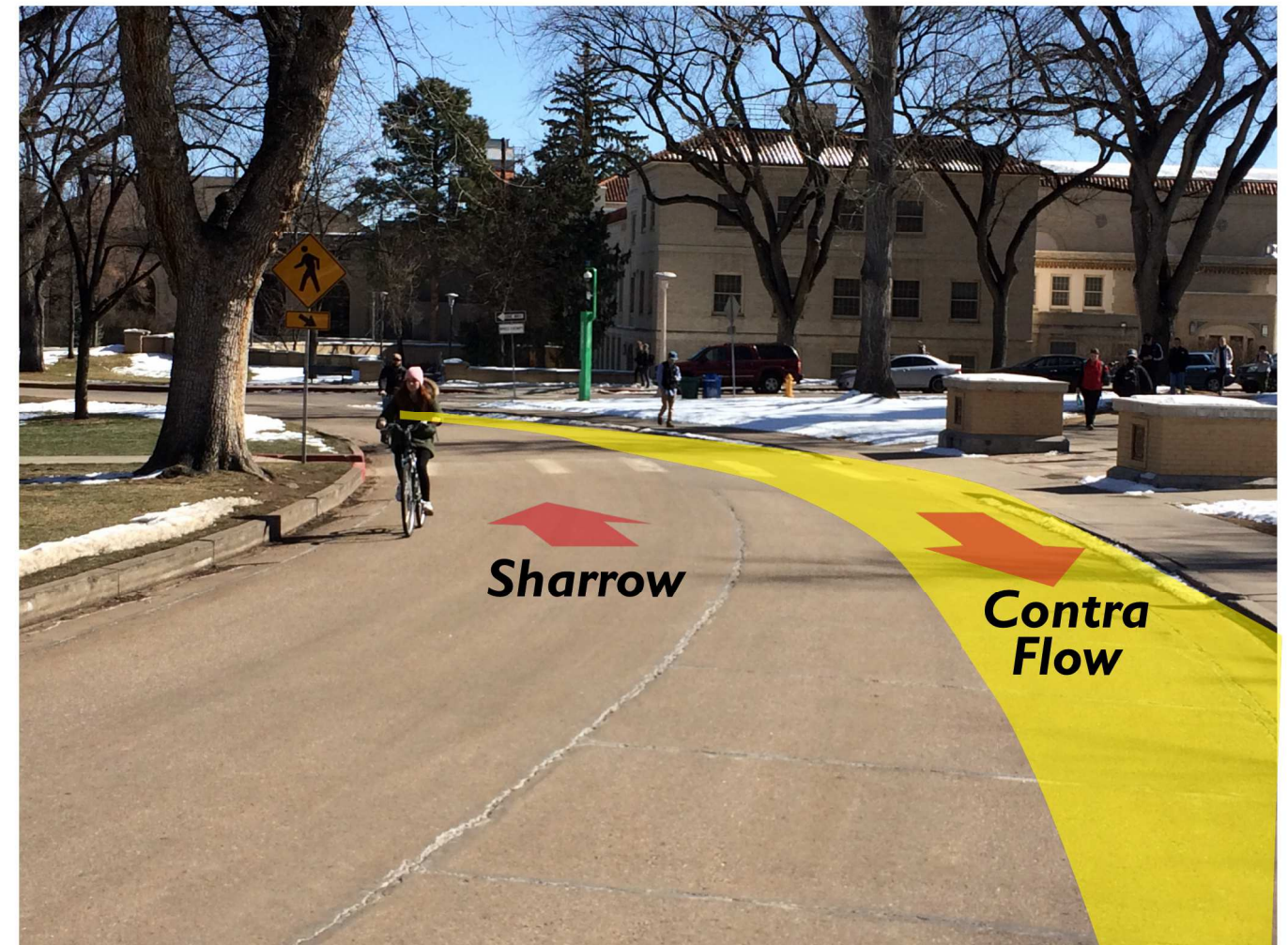
Colorado State University



Supplemental Masterplan Graphic



**View Looking East at Amy VanDyken -
Opt1 Widened Sidewalk**



**View Looking East at Amy VanDyken -
Opt2 Contraflow bikelane?**



View Looking Northwest at Amy VanDyken and Oval Drive



View Looking West at Amy VanDyken -



Conceptual Site Plan



View Looking West from Oval